



PLAN NH
Visioning *for* Sustainable Communities



Brentwood Charrette

May 12-13, 2023



Agenda

- Who is Plan NH?
- What is a Charrette?
- Meet the Team
- Project Area Overview
- What We Saw
- What We Heard
- Recommendations
- Q&A



Who is Plan NH?

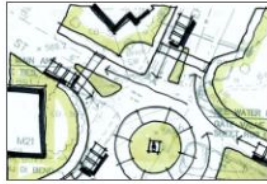


- 501(c)3 organization founded in 1989
- *Vision* of healthy and vibrant communities across the State
- *Mission*: to foster excellence in planning, design, and development of New Hampshire's *built environment*
- *Strategy*: to share information and inspiration for how community design and the built environment can contribute positively to where we live, work, and play

What is a Plan NH Charrette?



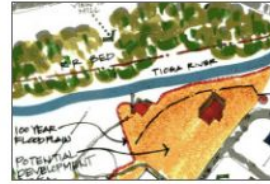
ALLENSTOWN 2016



ASHLAND 2011



BARNSTEAD 2006



BELMONT 1996



BERLIN-GORHAM 2002



BRADFORD 1998



BRISTOL 2008



BRISTOL 2018



CANDIA 2003



CHICHESTER 2014



COLEBROOK 2010



DEERFIELD 2000

- Listening and brainstorming session grounded in planning and design and focused on the built environment
- Two-day exercise utilizing an multidisciplinary team of volunteers
- Response to an application from a town or city and their identified design challenge

Who are our volunteers?

- Designers, planners, engineers, preservationists, and other related professionals
- Individuals passionate about the built environment and giving back to the Granite State
- Teams are built to meet the unique design challenges of the host community



“I love these small NH towns
and helping them thrive.”

-volunteer traffic engineer

What does the Charrette look like?

- Intensive 2-day schedule
- Day 1
 - Tour of the target area
 - Stakeholder meeting
 - Community input session #1
 - Community input session #2
- Day 2
 - Team work session
 - Final report out
- Post-Charrette
 - Final report provided to host community within 10-12 weeks



Meet the Team

- Tiffany Tononi McNamara, **Plan NH Executive Director**
- Jamie Simchik, **Simchik Planning & Development**
- Sarah Wrightsman, **New Hampshire Housing**
- Alissa Del Tufo, **Plan NH**
- Bob White, **GPI**
- Christian Zepeda-Lipovsky, **UNH Community & Environmental Planning Student**
- C.R. Willeke, **NH Department of Transportation**
- David Bartsch, **Bartsch Landscape Architecture**
- Jeff Hyland, **Ironwood Design**
- Jenn Rowden, **Rockingham Planning Commission**
- Kyle Barker, **Barker Architects**
- Leah Withers, **UNH Community & Environmental Planning Student**
- Lisa Burk-McCoy, **NH State Council on the Arts**
- Makayla Edgecomb, **UNH Community & Environmental Planning Student**
- Nate Bernitz, **UNH Cooperative Extension**
- Will Cleveland, **UNH Community & Environmental Planning Student**



Why Plan NH came to Brentwood

- June 2022 - Plan NH received an inquiry from the Town of Brentwood
- November 2022 - Town of Brentwood Economic Development Committee, in partnership with the Recreation Committee and the Planning Board, submitted an application to Plan NH
- May 2023 - Plan NH Charrette Team came to Brentwood for our 75th Community Design Charrette



Why Plan NH came to Brentwood

Area of Opportunity/Focus:

- Reimagining the centrally located “Brentwood Rec” (located at 190 Rte. 125), resulting in an improved community quality of life and enhancing Brentwood as an attractive location for employers and their talented workers.
- Furthering the 2018 study *Promoting Parks and Recreation’s Role in Economic Development* which stated: “Investments that strengthen quality of life can spur sustained economic growth that attracts talent, which in turn supports business attraction and development.”
- Envisioning a centrally located area for large community gatherings, celebrations, events, concerts, Farmer’s Markets, sports tournaments, and more.

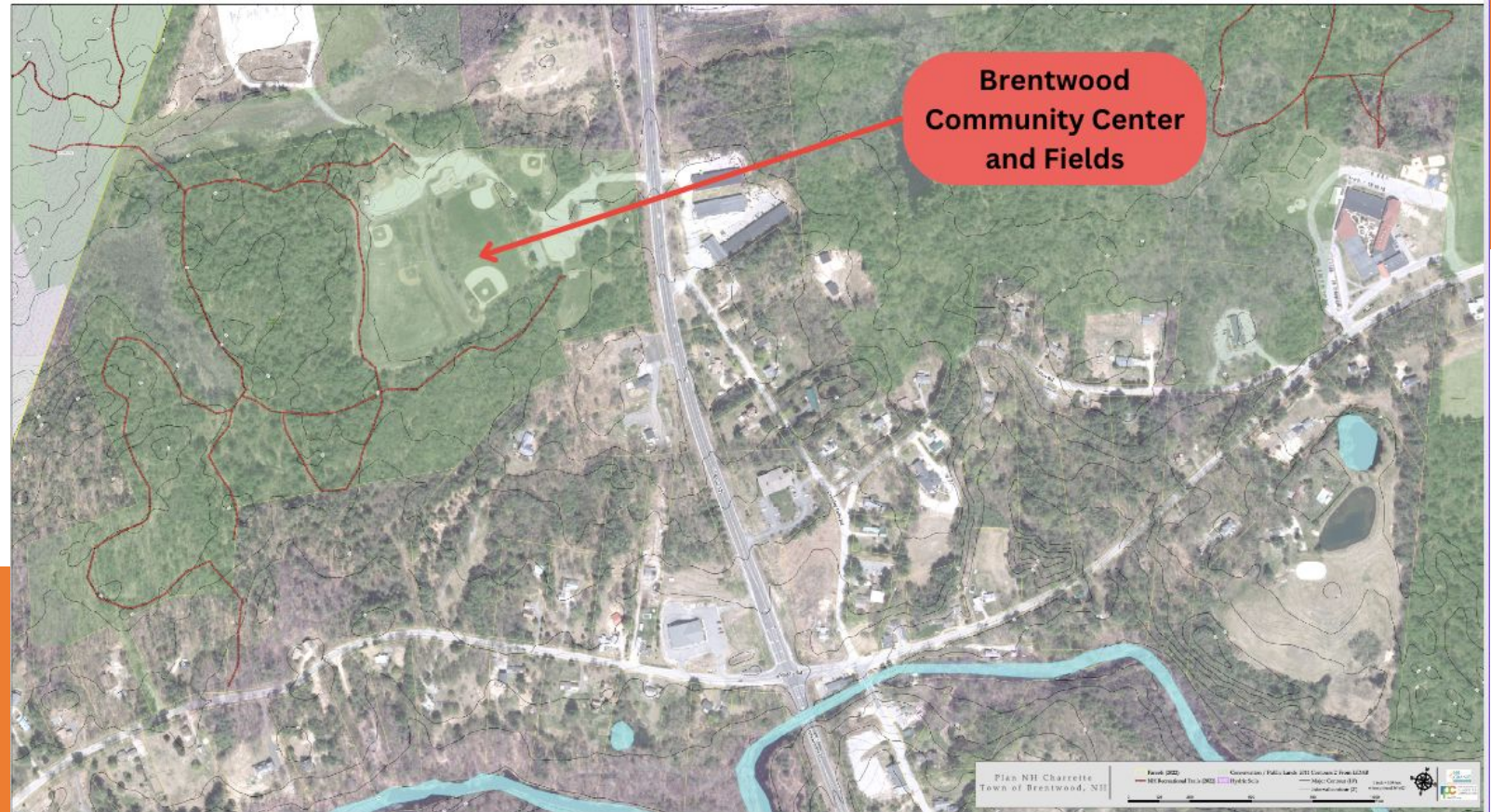
Project Area(s)

- Main Area:
 - Brentwood Community Center and Fields



Project Area(s)

- Main Area:
 - Brentwood Community Center and Fields
- Sub Areas:
 - NH-125 Corridor
 - Other Town Properties
 - Library
 - Town Hall



What we saw



- We took a tour Friday morning of the whole Rec facility

What we heard from you

1. What do you see?
2. What do you want to see?
3. What else do we need to know?



What we heard from you

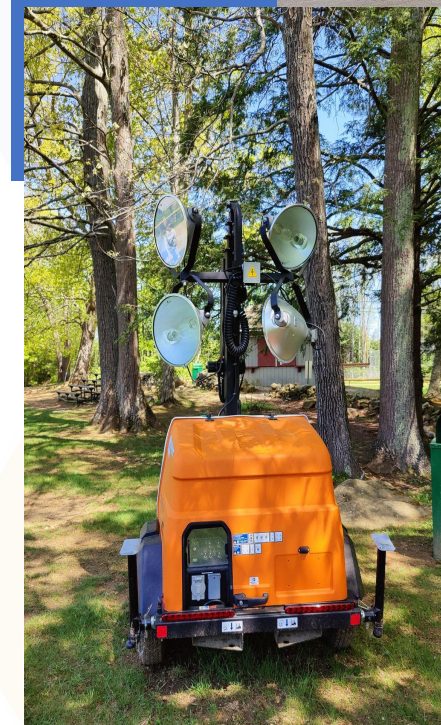
“Let’s find some ways to bring us all together”

“Multigenerational, four season, something for everyone”

“Community connections, what if you could ride your bike to the library, then go to Lindy’s, ect”

We asked: *What do you see?*

- Community meeting space for recreation, events, voting, and more
- Wide variety of users (i.e. kids, seniors, blacksmiths, bowhunters)
- Uses focused on youth and sports, less for seniors and other recreation opportunities
- Trails and conservation lands
- Occasional parking chaos, safety concerns
- Safety concerns along Route 125 and turning into the Rec entrance
- Lack of adequate infrastructure
- Underutilized space, lots of potential



We asked: *What do you want to see?*

- Increased safety and accessibility
- Improved facilities (i.e. lighting, bathrooms, parking, etc.)
- Reconfigured sports fields/courts to allow for additional sport-related options
- More options for “mature adults,” especially for seniors
- Honoring the original intent of the land
- More non-sport programming and events (i.e. movie nights, farmers market, etc.)
- Greater connectivity within the Rec area, to the nearby trail system, and to other community assets



We asked: *What else do we need to know?*

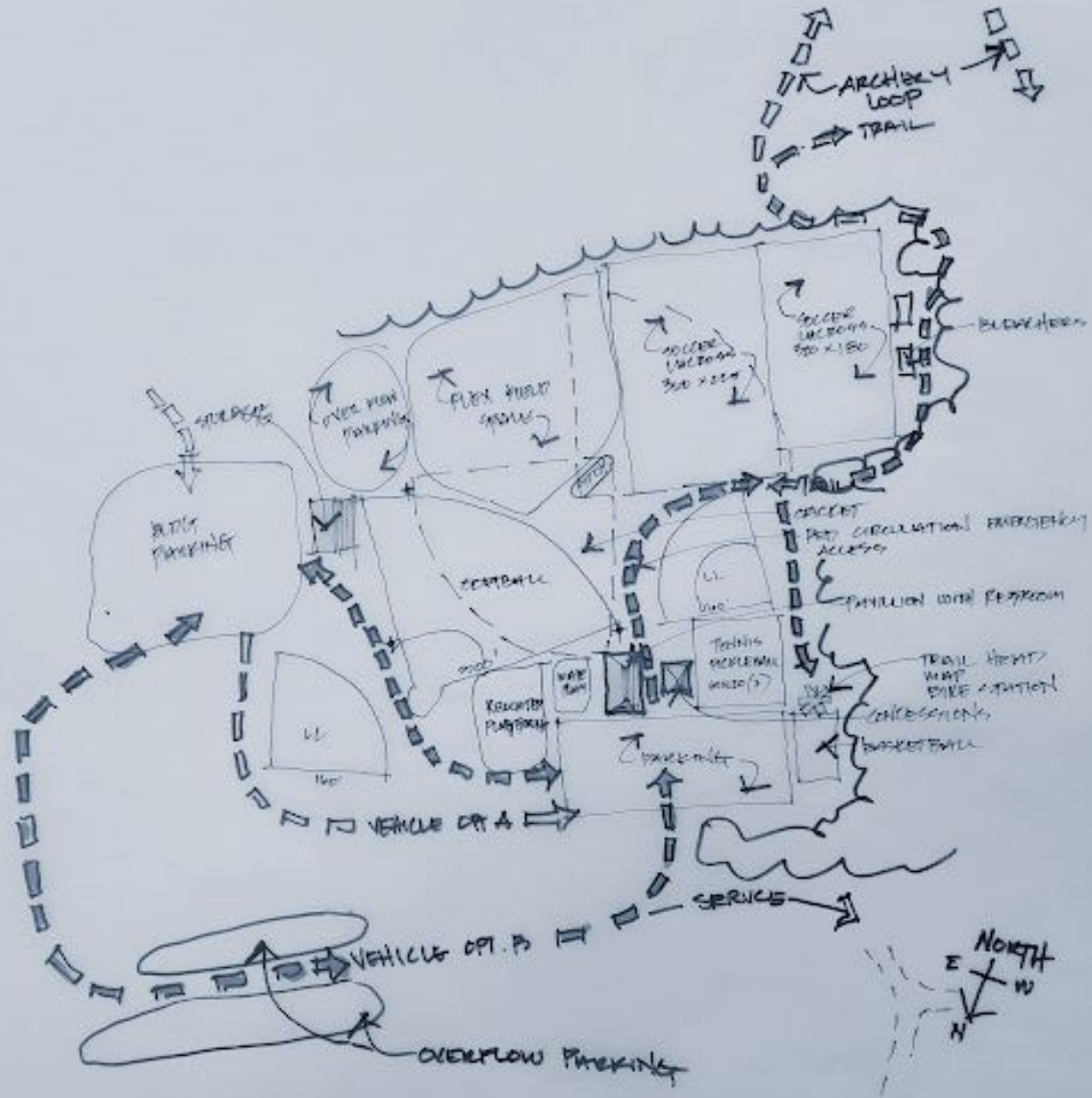
- 40% of utility costs for the recreation building are covered by the town
- Recreation Director's office is not located in recreation center
- Prominent blacksmithing and archery clubs utilize property
- Upcoming capital projects (police department, library improvements).
- Interest in phased approaches and creative funding opportunities



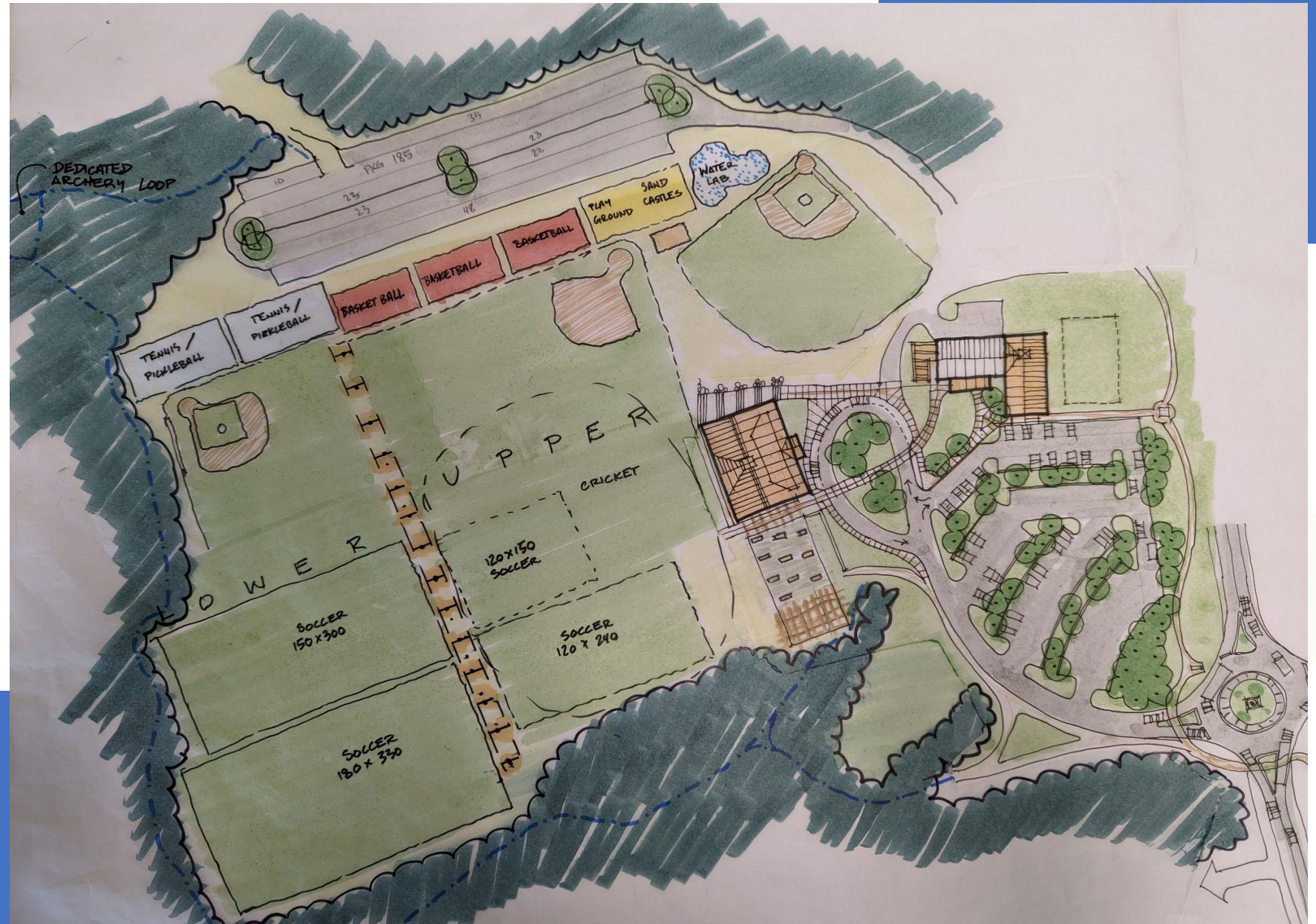
Recommendations



Field Configuration



Field Configuration



Field Configuration





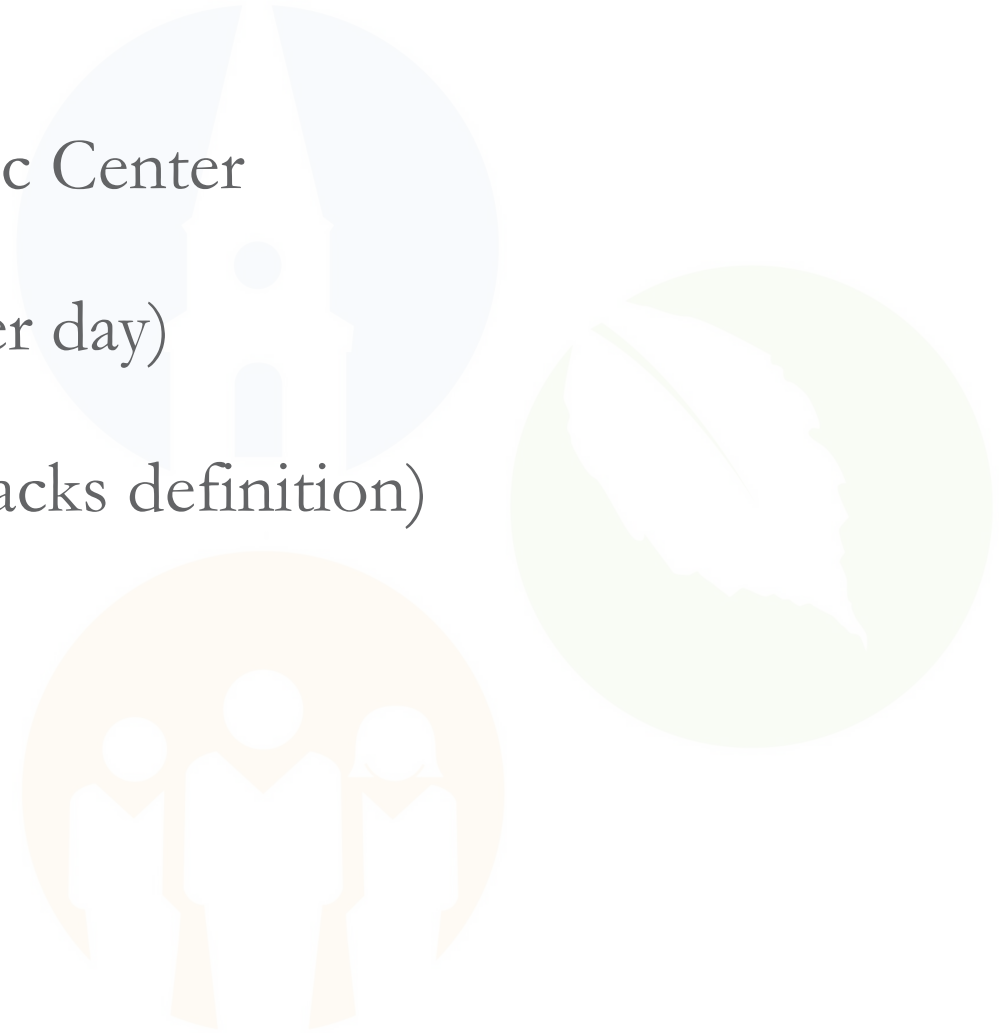
Traffic & Parking Improvements

Roadway - NH 125 Area

Getting From Rec Center to Library and/or School

What we heard:

- Can't walk or bike from School/Library to Rec Center
- Too dangerous to cross NH 125 on foot
- Lots of traffic on NH 125 (15,000 vehicles per day)
- Speeds are high (posted 55 mph)
- Hard to even see Rec Center from roadway (lacks definition)



Roadway - NH 125 Area

Getting From Rec Center to Library and/or School

New intersection on NH 125 for Rec Center:

- Gateway feature coming into Brentwood from Epping – Slows vehicle speeds
- Improves safety at intersection for Town events and everyday users
- Allows pedestrians and bikes to safely cross the road
- Creates a connection to library and school.

General Example Roundabout *with* Sidewalks →



Roadway - NH 125 Area

Getting From Rec Center to Library and/or School

Single Lane Roundabout on NH 125:

- Uphill (south) of current intersection for sight line improvements
- Aligns with Crawley Falls Rd to make a 4-way intersection
- Creates additional space for parking at the Rec Center
- Accessible sidewalks and refuge for pedestrians to cross one lane at a time
- Connects to potential future sidewalks along NH 125 and NH 111A and/or local roads to library and/or school



Roadway - NH 125 Area

Getting From Rec Center to Library and/or School

Potential locations to add sidewalks:

- NH 125 both sides
- Wide ROW
- NH 111A north side
- Crawley Falls Rd
- Dalton Rd

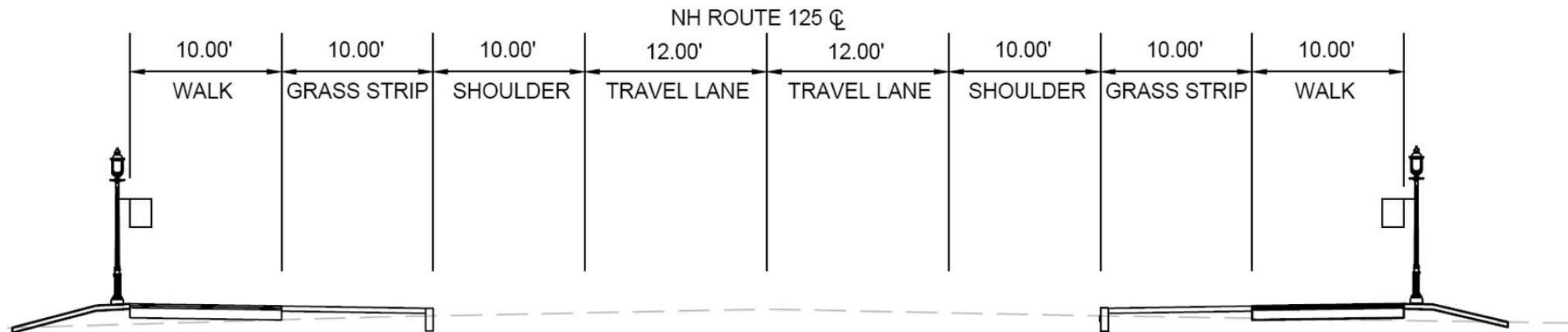


Roadway - NH 125 Area

Getting From Rec Center to Library and/or School

Typical Section along wide Right-of-Way of NH 125

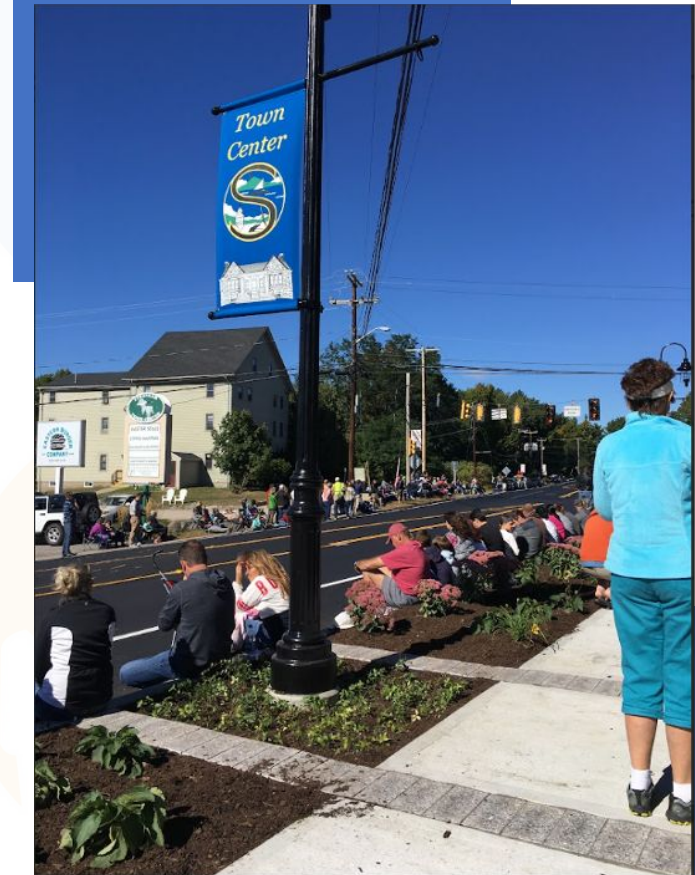
Grass buffer, wide sidewalks, ornamental lighting, banners, trees



Roadway - NH 125 Area

Getting From Rec Center to Library and/or School

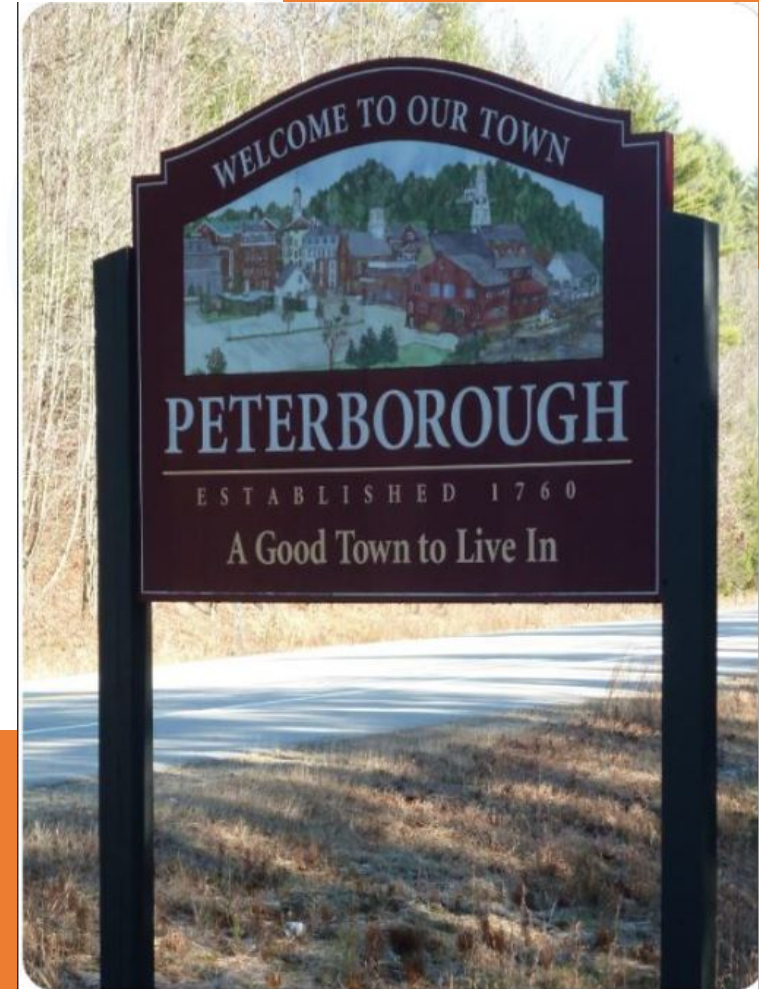
Creating vibrancy at busy intersections as well as walkability and human scale features



Roadway - NH 125 Area

Getting From Rec Center to Library and/or School

Wayfinding and Welcome Signs



Utilizing Arts to Increase Connectivity

Creating uniform visual identity

- Marker at town sites
- Bike racks
- Trailheads



Community Assets

Existing Assets

- New England Blacksmiths
- Small pavilion
- Trails
- Sports fields
- Rural character
- History of strong community engagement

Potential Future Assets

- Enlarged pavilion
- Indoor stage with indoor/outdoor flexibility
- Sidewalks
- Expanded and interconnected trail network



Activating the Pavilion & Fields



Activating Pavilion & Fields



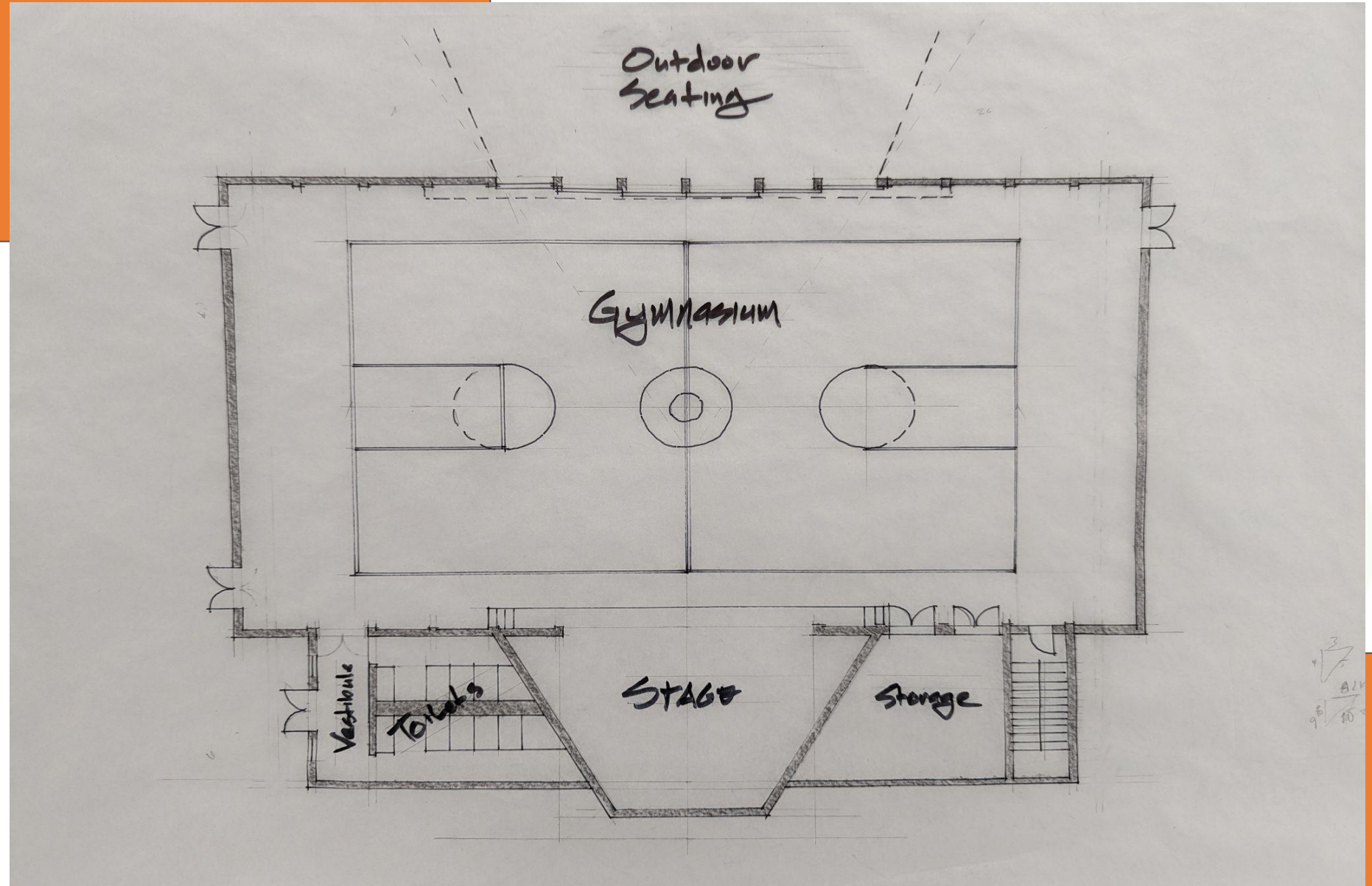
Activating Trails



Inspiration Images



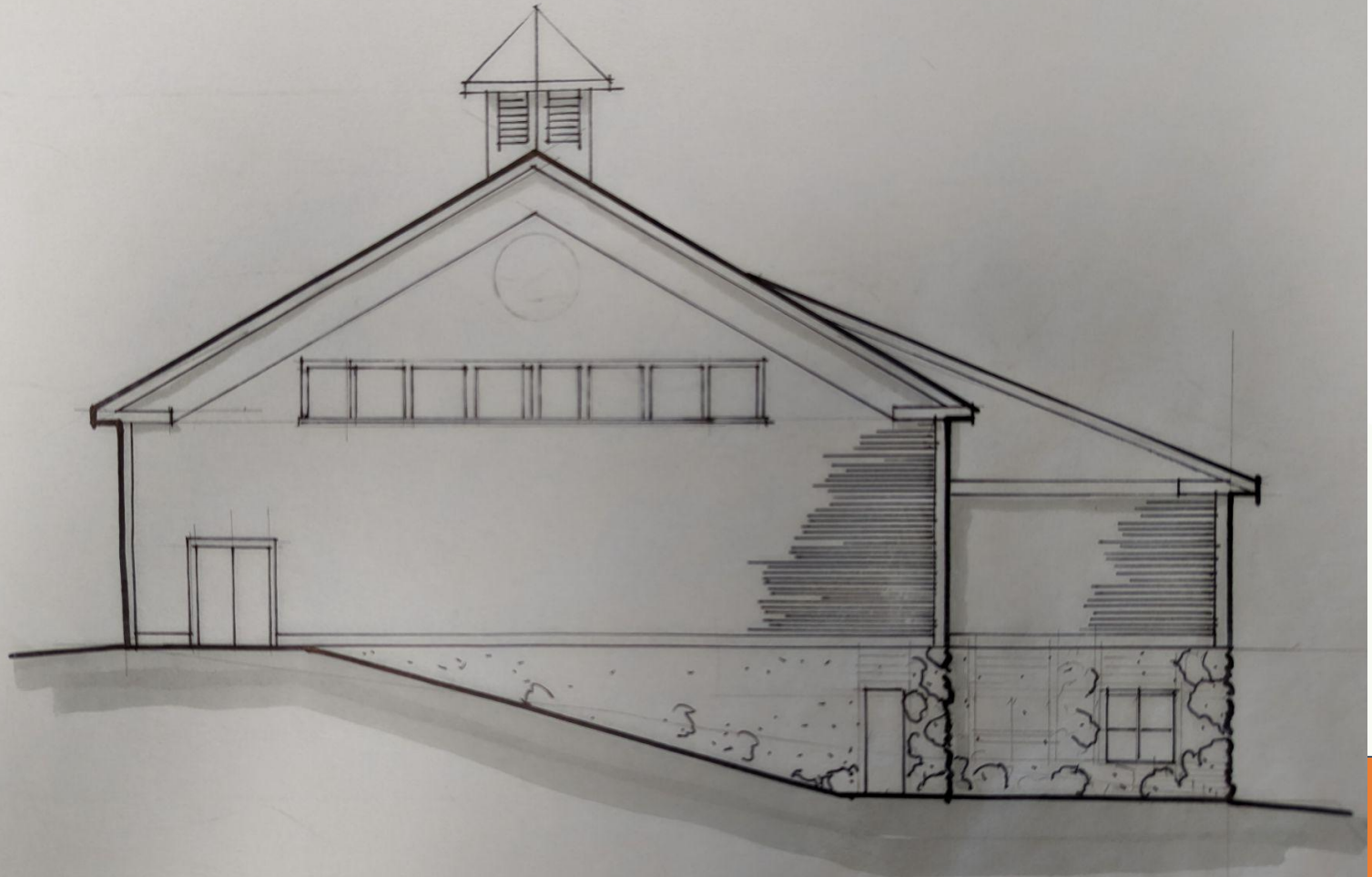
Multipurpose Community Center



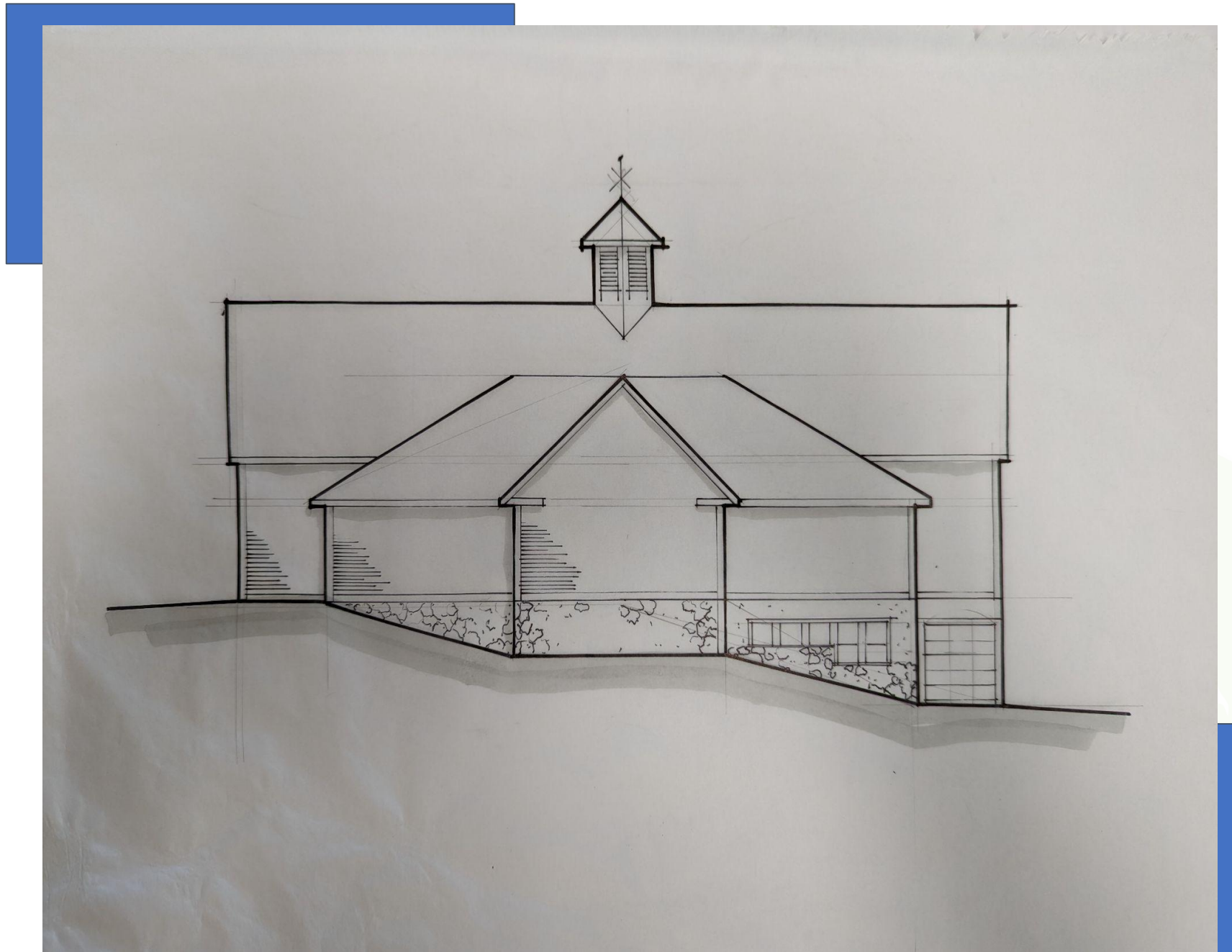
Multipurpose Community Center



Multipurpose Community Center



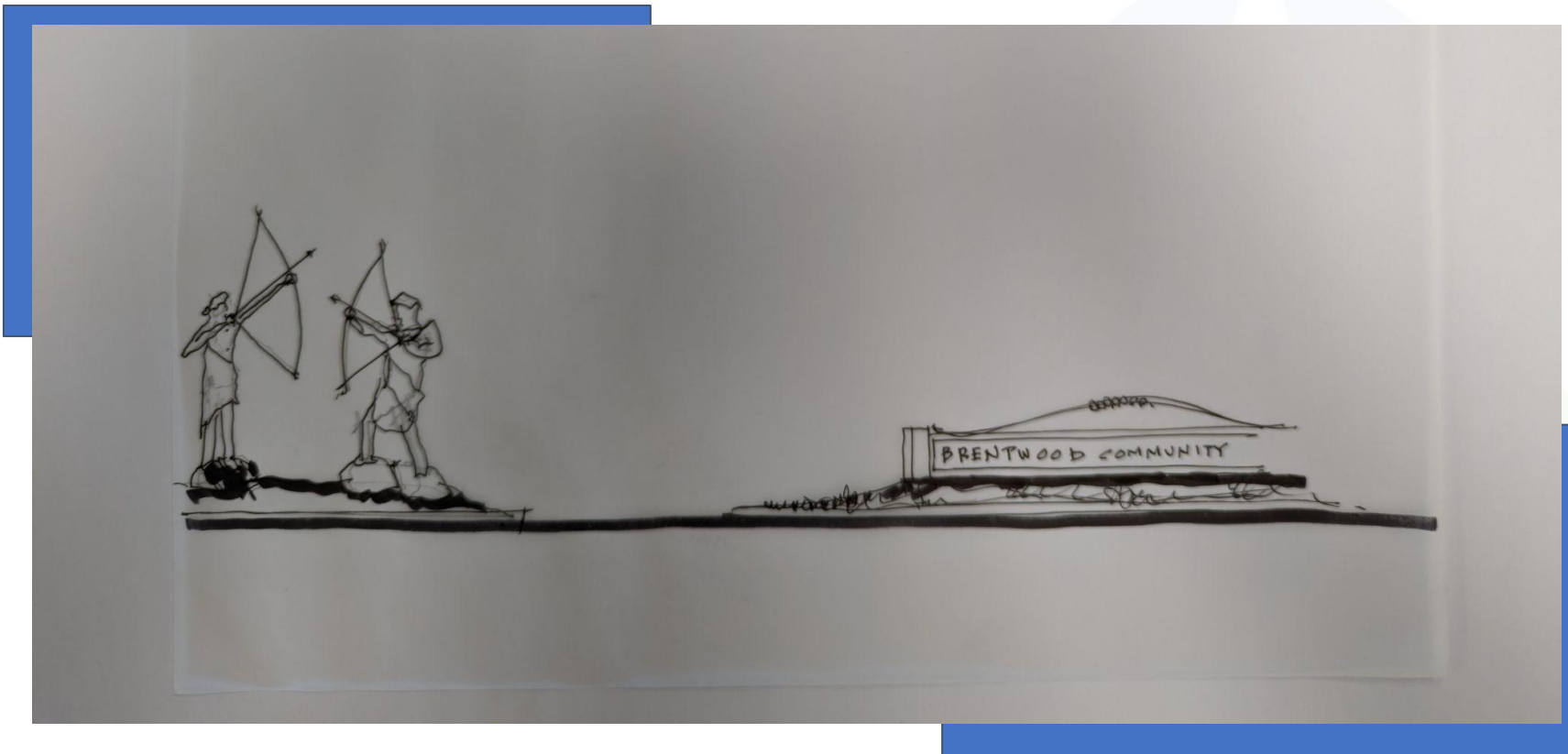
Multipurpose Community Center



Multipurpose Community Center



Design Features

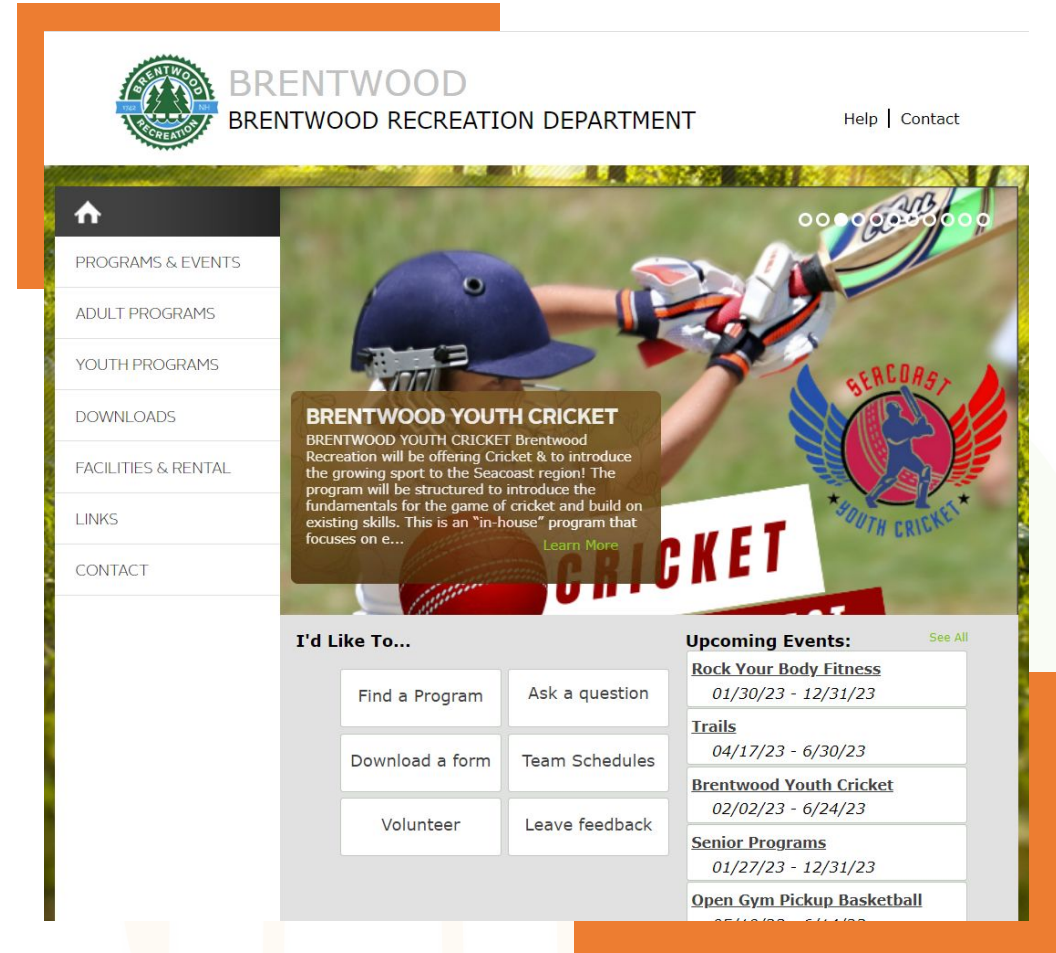


Additional Features



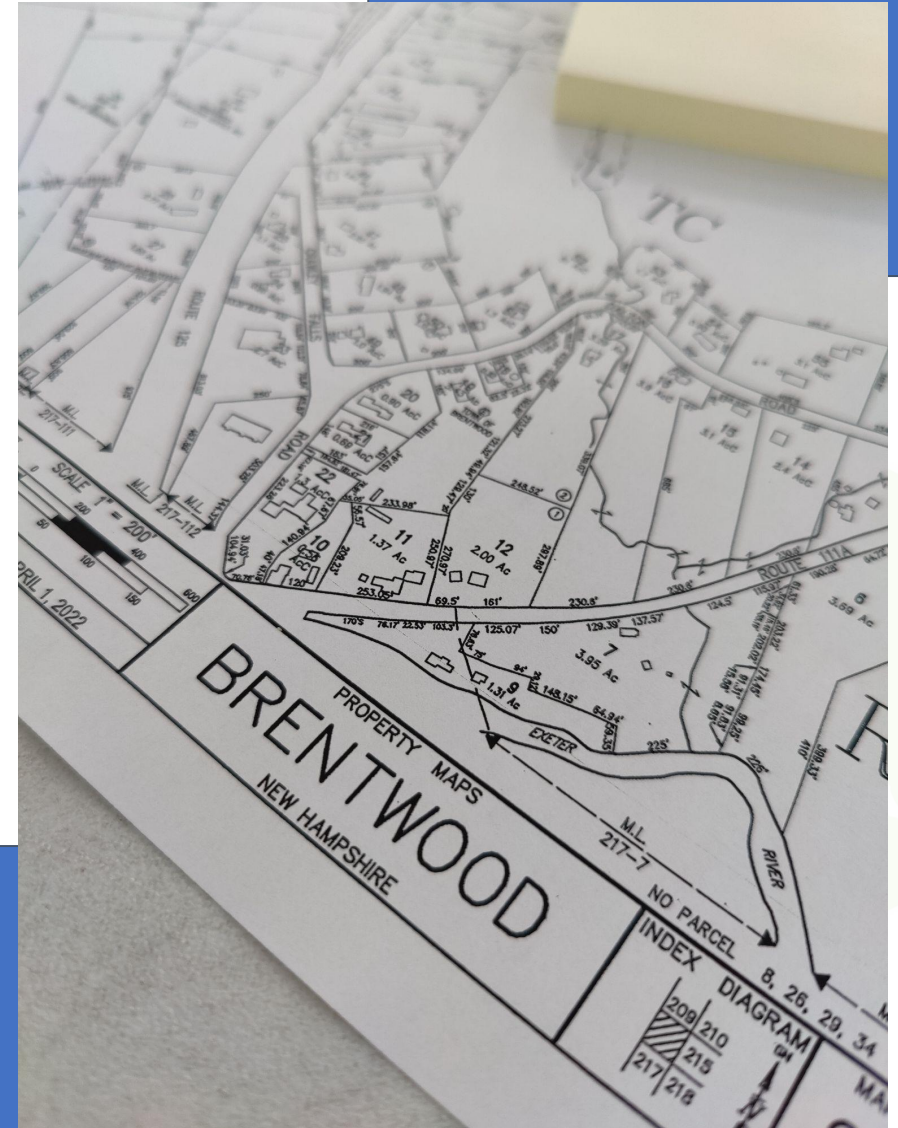
Operations

- Full-time Rec Director
- Part-time Engagement & Volunteer Coordinator
 - Concessions (Girl/Boy Scouts)
 - Maintenance (Partnership Organizations)
- Interactive Website
 - Online Bookings & Registrations
 - Facility Maps
 - Real-time Availability
- Increased Town Investment in Rec Department



Thank you Brentwood!

- Economic Development Committee
- Recreation Committee
- Planning Board
- Bob Rossman, EDC
- Stef Kizza, Planning Board, EDC
- Andy Gray, Recreation Director



Community Q&A

An opportunity for the community to ask questions,
address any concerns, and help you better
understand how these recommendations best serve
YOU.





PLAN NH
Visioning *for* Sustainable Communities

*Thank You
for Joining Us!*

If you have any questions, please email info@plannh.org.



Appendix: Rec Facility Usage Ideas Mentioned by Residents

Accessibility (ADA)

Bathrooms

Bubble

Bike Maintenance

Concessions

Dog Park

Lights

Speakers

Sponsors

Storage

Walking Paths

Archery

Baseball

Basketball

Blacksmithing

Cornhole

Cricket

Disc Golf

Ice Hockey

Mountain Biking

Pickleball

Soccer

Street Hockey

Community Garden

Crafts Fair

Farmers Market

Food Trucks

Nature Play

Performances

Playground

Pool

Splash Pad/Water Feature

